

Byrdwell Conference

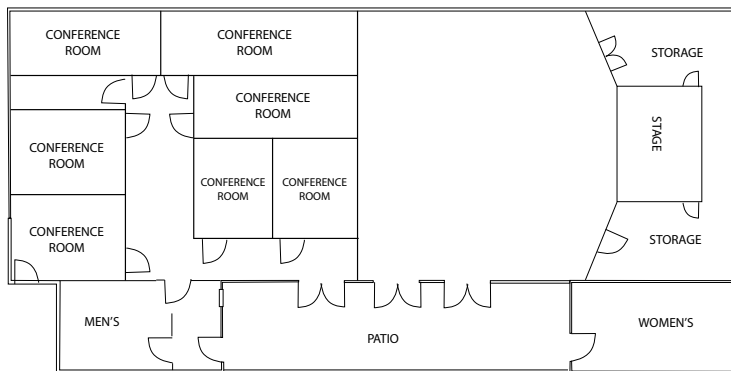
Cedarmore Main Campus

Renovated in 2010, the Byrdwell Conference Center now boasts a large meeting space along with conference rooms. The large meeting space includes a theatre-style stage, widescreen front displays, sound and lighting. It is an ideal venue for groups of 150-250 people.



MEETING

- Maximum seating capacity: 250
- Minimum 150 guests to rent
- Stage, small sound system (good for speaking), lighting and rear projection screens are provided.
- Several breakout spaces



Outside view



Worship service during camp



Great for speaking engagements